

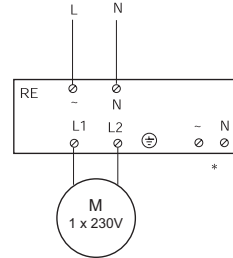
Auto transformer 5 step speed controls

RE - Single Phase Auto Transformer

	Amps	Fuse	H x W x D mm	kg
RE 1.5	1.5A	1.8A	200x105x105	1,5
RE 3	3A	3.5A	200x105x105	2,5
RE 5	5A	6A	200x105x105	4,1
RE 7	7A	8A	275x105x145	7,5

Output voltages for each of the 5 steps

Steps	1	2	3	4	5
Voltage V	80	105	130	160	230

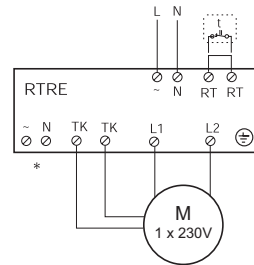


RTRE - Single Phase Auto Transformer with TK's

	Amps	Fuse	H x W x D mm	kg
RTRE 1.5	1.5A	1.8A	200x105x105	1,6
RTRE 3	3A	3.5A	200x105x105	2,6
RTRE 5	5A	6A	200x105x105	4,2
RTRE 7	7A	8A	275x105x145	7,6

Output voltages for each of the 5 steps

Steps	1	2	3	4	5
Voltage V	80	105	130	160	230

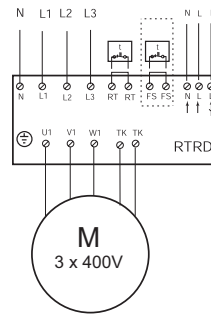


RTRD - Three Phase Auto Transformer with TK's

	Amps	Fuse	H x W x D mm	kg
RTRD 2	2A	-	255x190x135	7,5
RTRD 4	4A	-	309x262x160	12,5
RTRD 7	7A	-	309x262x160	18
RTRD 14	14A	-	290x400x166	30

Output voltages for each of the 5 steps

Steps	1	2	3	4	5
Voltage V	95	145	190	240	400



Multi-Unit Speed Control

If multiple fans are to be run off one Auto transformer speed control, then the total combined full load currents (FLC) of the fans, plus a 20% margin must not exceed the Amperage of the controller. All TK's must be wired in series or Fans without TK's will each require a motor protection device, STET 10B.

Example

4 no KDRD50 Fan off 1 no RTRD

Full load current of fan 0.98amps multiplied by 4 = 3.92amps

Plus 20% = 4.7amps

Therefore speed controller required is RTRD 7 (7amps)

