

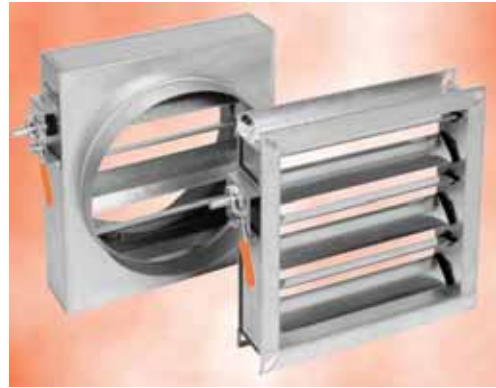
Volume Control Dampers

Features

- Standard case construction is galvanised mild steel
- Two airfoil blade designs
- Four casing options
- Out of airflow linkage
- Easy conversion from manual to motorised or vice versa
- Infinite sizing capability from 100 to 1000mm, 100 to 800mm dia.
- Variable flange dimensions
- Comprehensive control options
- Can be supplied with blades and case in 316/430 stainless steel

Specifications & Tests

- Unless stated otherwise, flange models suitable for class A & B of DW144, spigot models suitable for class A B & C
- Conforms to HVCA specification DW144
- Conforms to Eurovent 2/2 classes A - C
- Independent performance tests for pressure drop, leakage and airtightness.
Test reports 143, 145 and 146 refer



Flangefit - 100 to 1000mm sq.

Spigotfit - 100 to 1000mm sq.

Circular Spigotfit - 100 to 800mm dia.

Flat Oval Spigotfit - 100 to 1000mm spigots

Control Options - Extended spindle, Hand Control, Electric Motor, Pneumatic Motor

Iris Dampers

The SPI is an iris damper for measuring and adjusting the airflow.

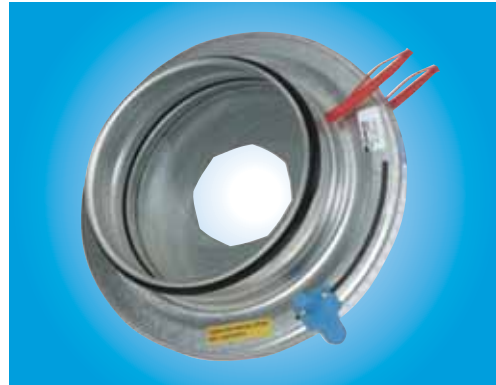
Specification: Low Noise level, centrally-formed airflow and fixed test points for precise measurements.

The damper also has an adjustment aperture which can be opened completely, which means there is no need for an access door for cleaning.

Available in sizes 100mm - 630mm Dia.

Max temp:- 70°C

The damper is manufactured from galvanised sheet steel and is fitted with a rubber seal tested for air-tightness.



Dimensions

| | Ø d | C | Ø D |
|---------|-----|----|-----|
| SPI 100 | 99 | 54 | 163 |
| SPI 125 | 124 | 63 | 210 |
| SPI 150 | 149 | 54 | 230 |
| SPI 160 | 159 | 60 | 230 |
| SPI 200 | 199 | 62 | 285 |
| SPI 250 | 249 | 62 | 333 |
| SPI 300 | 299 | 65 | 405 |
| SPI 315 | 314 | 63 | 406 |
| SPI 400 | 399 | 70 | 560 |
| SPI 500 | 499 | 60 | 644 |
| SPI 630 | 629 | 60 | 811 |

